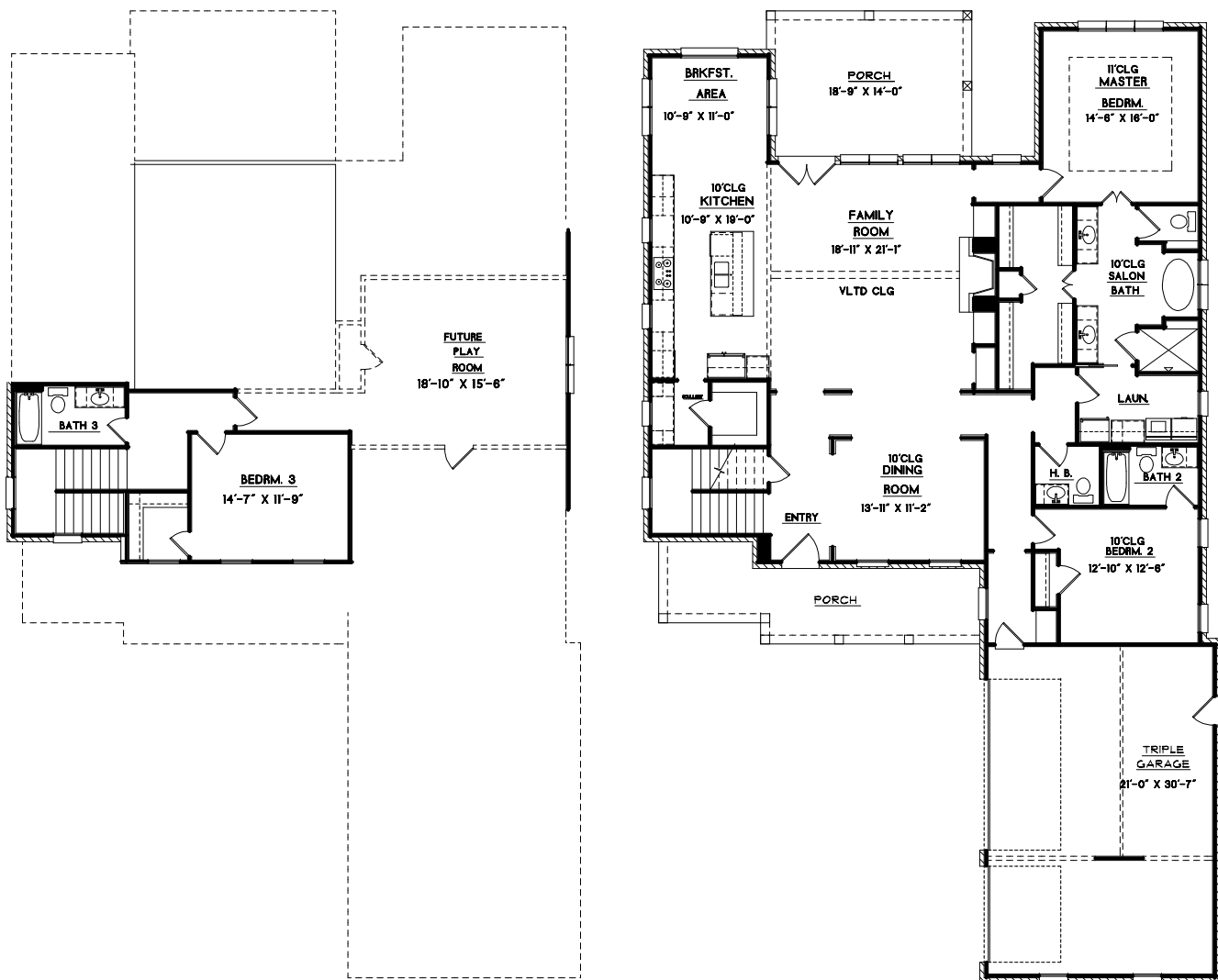


CLASSIC HOME DESIGNS.



COPYRIGHT © 2019 CLASSIC HOME DESIGNS

HTD DN BRK: 2413 SQ FT
HEATED UP: 313 SQ FT

TOTAL BRICK: 2846 SQ FT

PLAN:
B495

GARAGE & STOR: 674 SQ FT
PORCHES: 491 SQ FT

OVERALLS:

WIDTH: 54'-1" DEPTH: 91'-4"