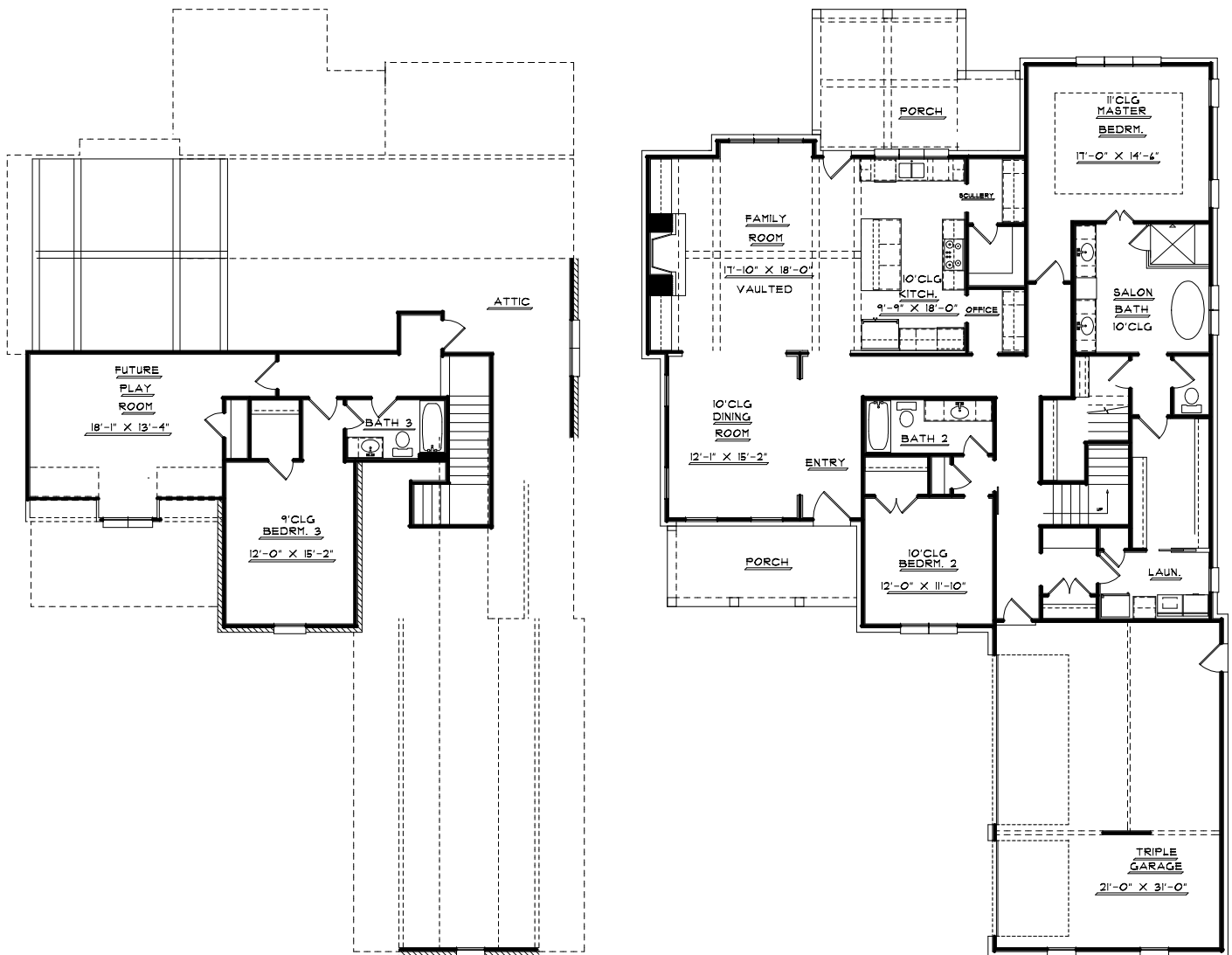





 CLASSIC HOME DESIGNS.



COPYRIGHT © 2019 CLASSIC HOME DESIGNS

HTD DN BRK : 2368 SQ FT
 HEATED UP: 318 SQ FT
 FUTURE UP: 310 SQ FT

TOTAL BRICK: 2686 SQ FT

PLAN:
 B494

GARAGE & STOR: 683 SQ FT
 PORCHES: 388 SQ FT

OVERALLS:

WIDTH: 55'-3" DEPTH: 90'-0"